

The purpose of this guide is to provide instructions for loading custom graphics into your ATM using the V05.xx.xx AP software.

Up to 8 custom graphic images can be loaded on each ATM and will rotate between each image and the ATM 'Welcome' screen, while the ATM is idle.

The size of the graphics is dependent on the model of ATM and screen size.

The following table gives the resolution (image size) needed for each model ATM.

Genmega:

- G1900 / G2500 / G2900 / G3500 / GT3000 = **800 x 480 pixels**
- GT5000 / G6000 = **1024 x 768 pixels**
- Onyx (G3000) = **1280 x 800**

Hantle:

- 1700W = **800 x 480 pixels**
- C4000 / T4000 = **800 x 600**

Specs for Custom Screens:

The custom screens should be saved as JPG (JPEG) images.

The file naming convention for all machines is the same:

center1.jpg through center8.jpg

The name of the file indicates the order in which the images will appear. center1.jpg would be the first custom ad screen to show, then the Welcome screen, then center2.jpg, then the Welcome screen, then center3.jpg ... etc. for each active image.

Once the screens are loaded into the ATM, they will need to be activated before they'll show up.

That is done in the Customer Setup Menu Screen Graphics Advertisement Enable / Disable.

Loading custom images to the ATM is done via GenRMS Pro monitoring software, or by loading directly at the ATM with a memory device.

There are several mainboard types depending on which model ATM you have and how old it is.

The loading procedure is different, so it's important to make sure this is correct.

There is a guide available to identify the different ATM control boards, however these general guidelines can help.

If your ATM has the internet (Ethernet) port on the left edge of the mainboard, then it's an ACU1

If your ATM has the internet (Ethernet) port on the top edge of the mainboard, AND there is only 1 USB port located on the top edge of the board, near the right corner, then it is ACU3 or ACU5.

ACU6 boards began shipping in late March 2014, and are identified by an ACU6 sticker which appears on the SD memory slot or board cover. They also have 2 USB ports side by side on the top edge of the board, closest to the right corner.

- For ACU1, ACU3 and ACU5 board, you must load graphics with an SD memory card.
- For ACU6 boards, you can use either an SD card or a USB memory device.

Quick Reference:

- For ACU1/ACU3/ACU5 the files should be copied in the following directory structure:

[SD Card] Common/img4SCR/center1.jpg~center8.jpg
update.acu file must appear in the root directory

- For ACU6 boards, use this directory structure

[USB or SD card] APP/Common/img4scr/center1.jpg~center8.jpg update.acu file must appear in the root directory

Following are instructions for how to set up the SD card or USB memory device:

If your ATM has an ACU1 / ACU3 or ACU5 mainboard, you'll need to load the graphics via an SD card as shown below.

Loading Graphics using SD (Secure Digital) card:

You must use an SDcard, or micro sd card w/ adapter that is no more than 2GB in size.



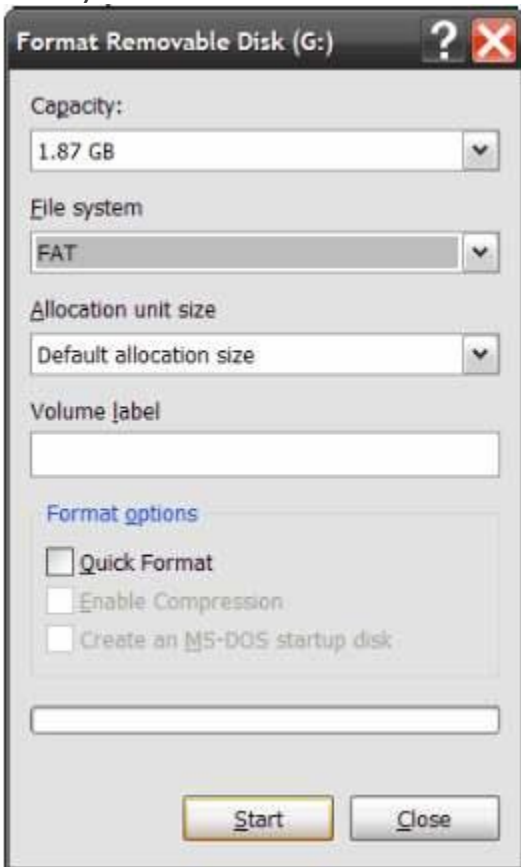
You may also need to purchase an SD card reader if your computer is not equipped with one.

Before using the SD Card, we recommend formatting it to remove all data.

Right click the removable memory device in 'My Computer' and select 'Format'.

**Make sure to select FAT for File System and NOT FAT32 when following the instruction in the link provided.

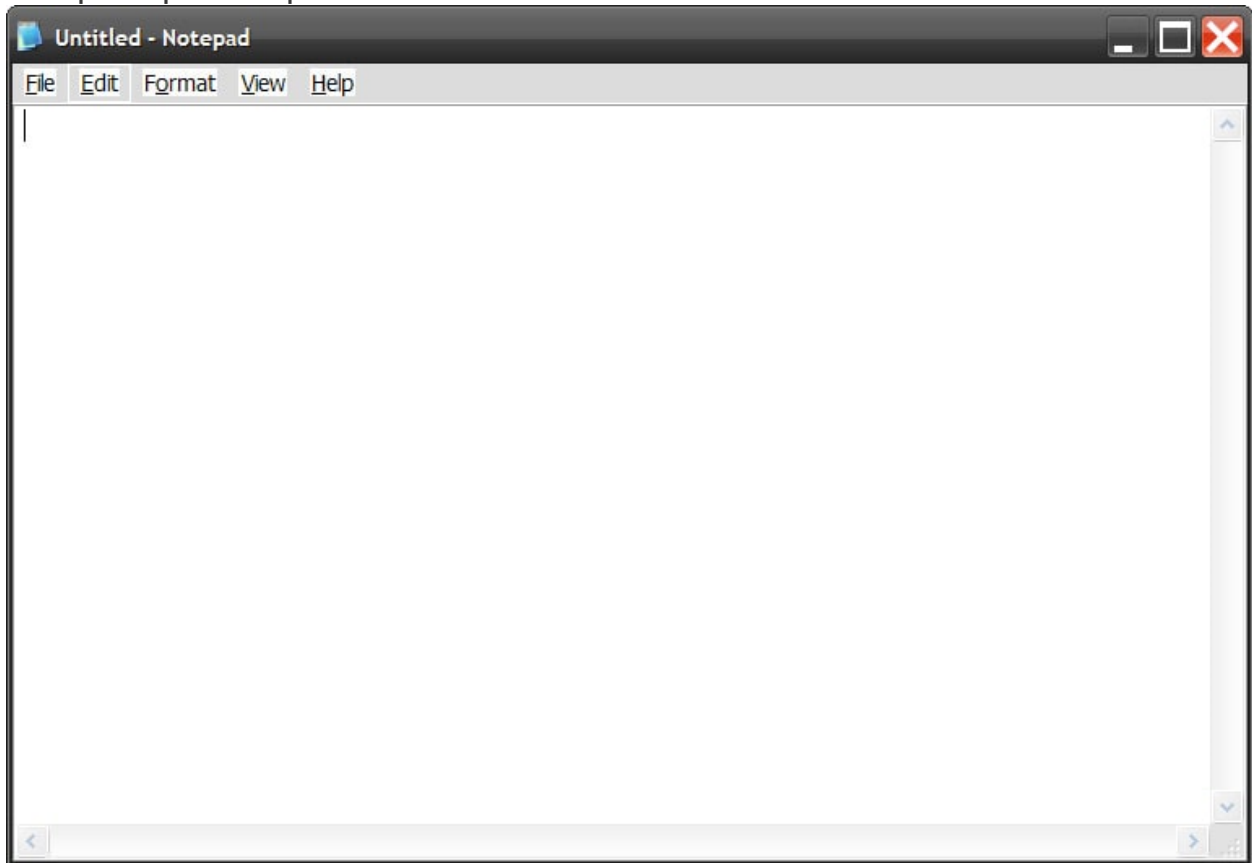
Exactly like this:



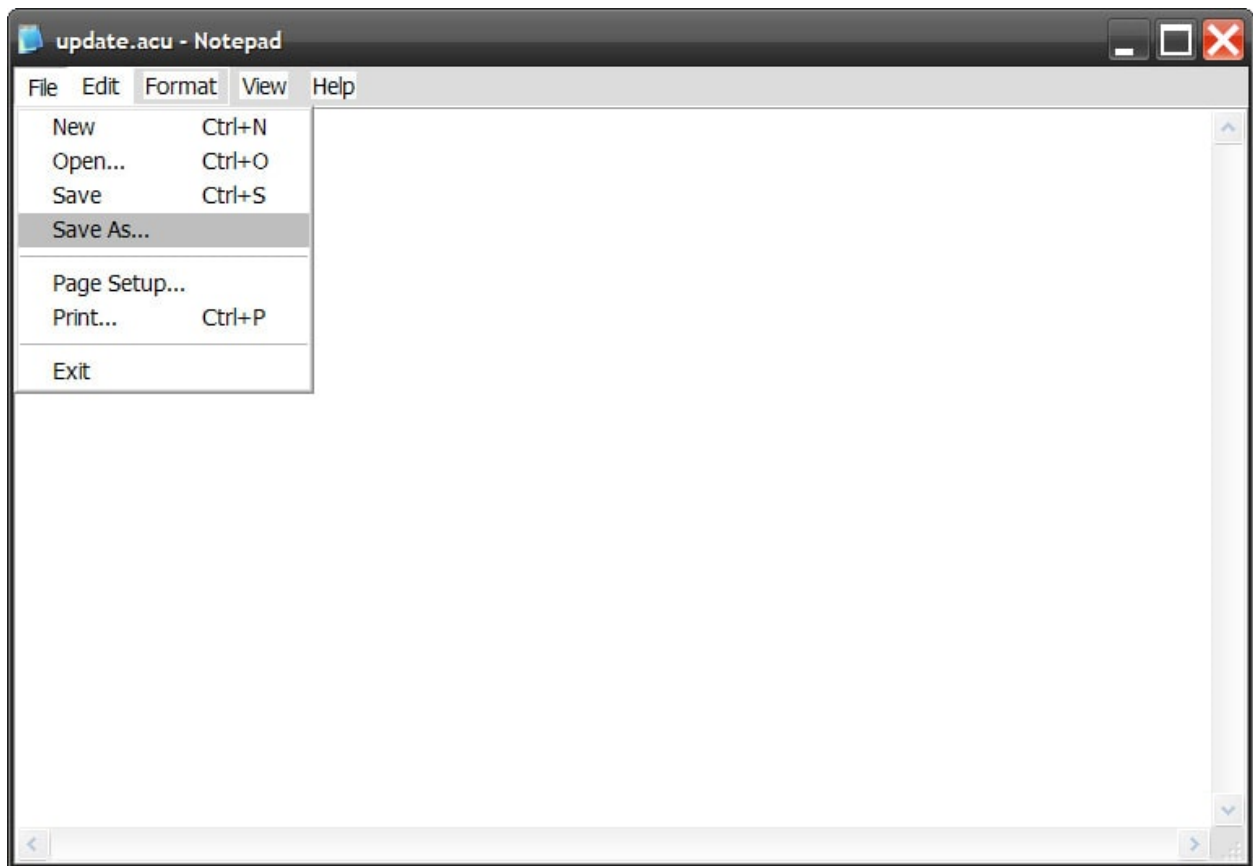
2. Next you'll need to create a file called update.acu and save it on the card. This file will have no data (0 bytes) but will instruct the ATM during loading.

To create this file:

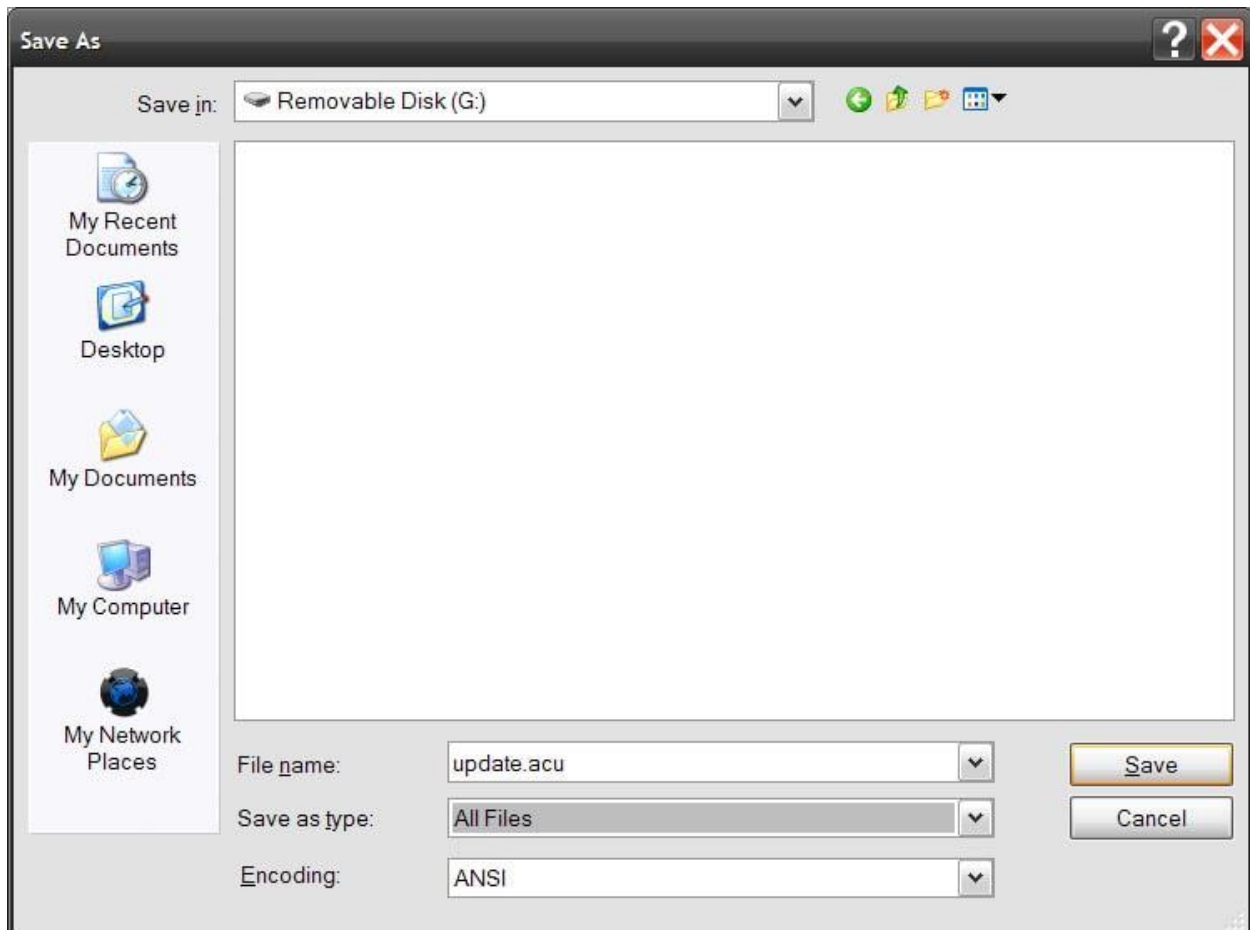
a. Open up a notepad document.



b. You can leave it blank and save it (File>Save As)



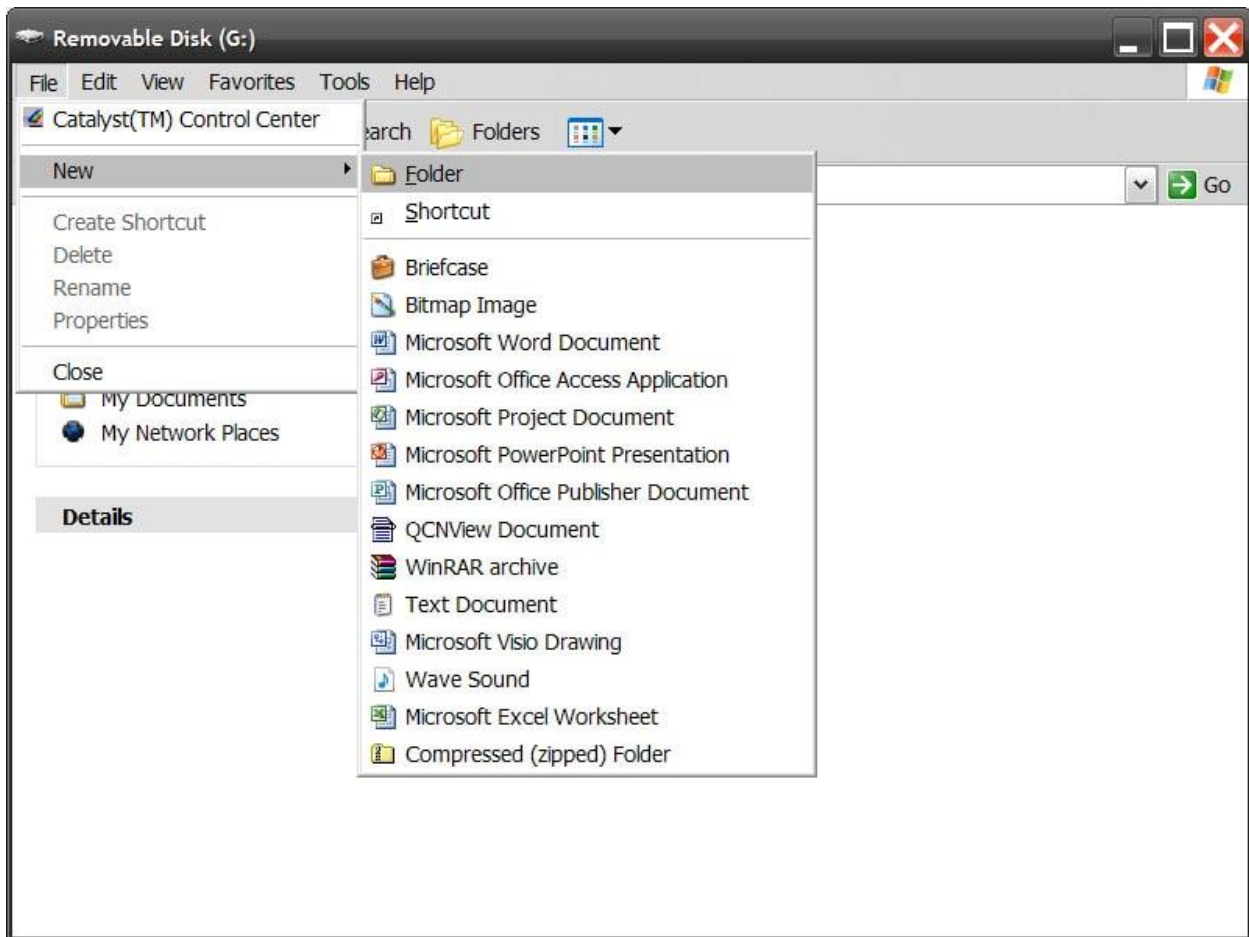
c. Save it as: File name: update.acu Save as type: All Files

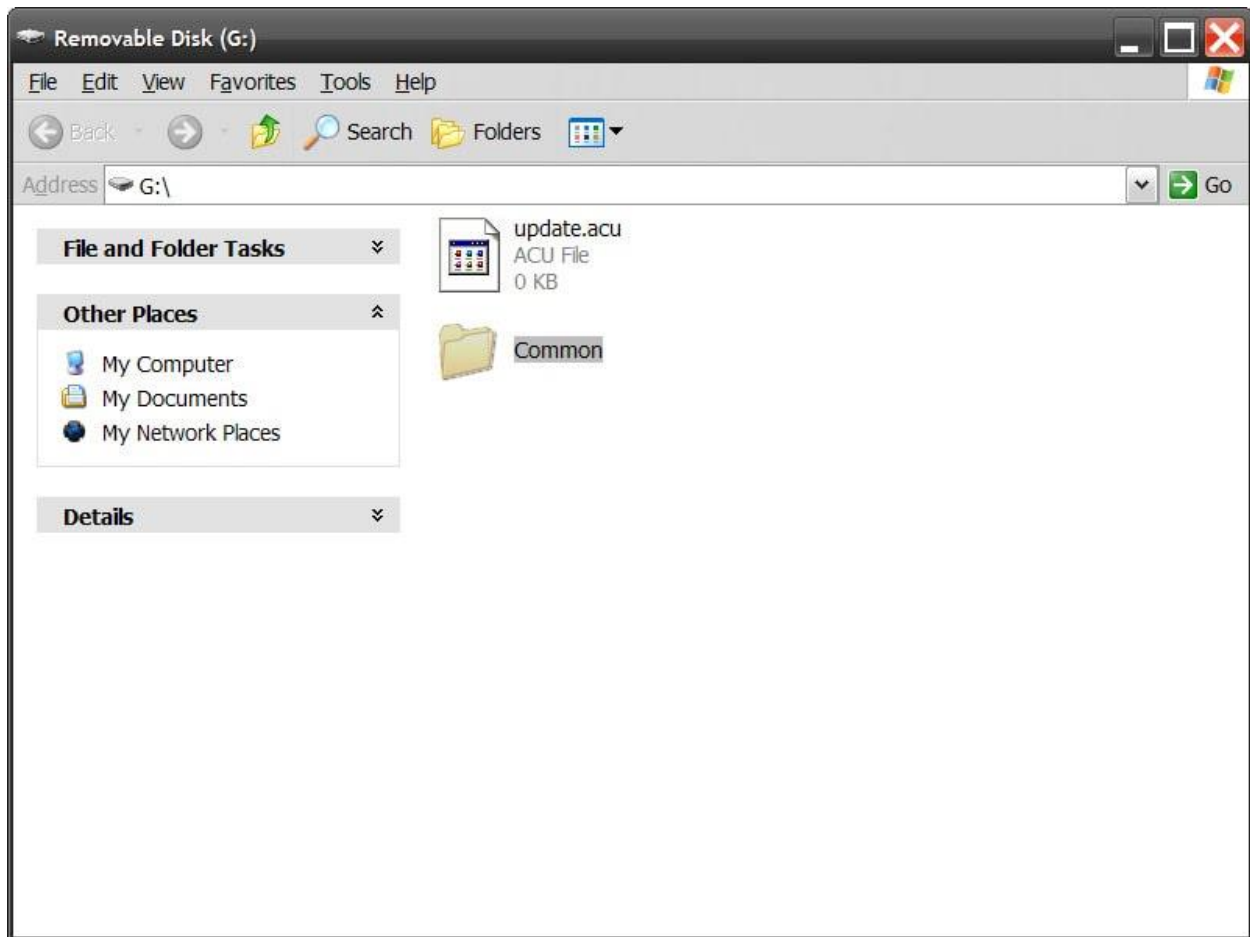


**Once it's saved the file should look like this

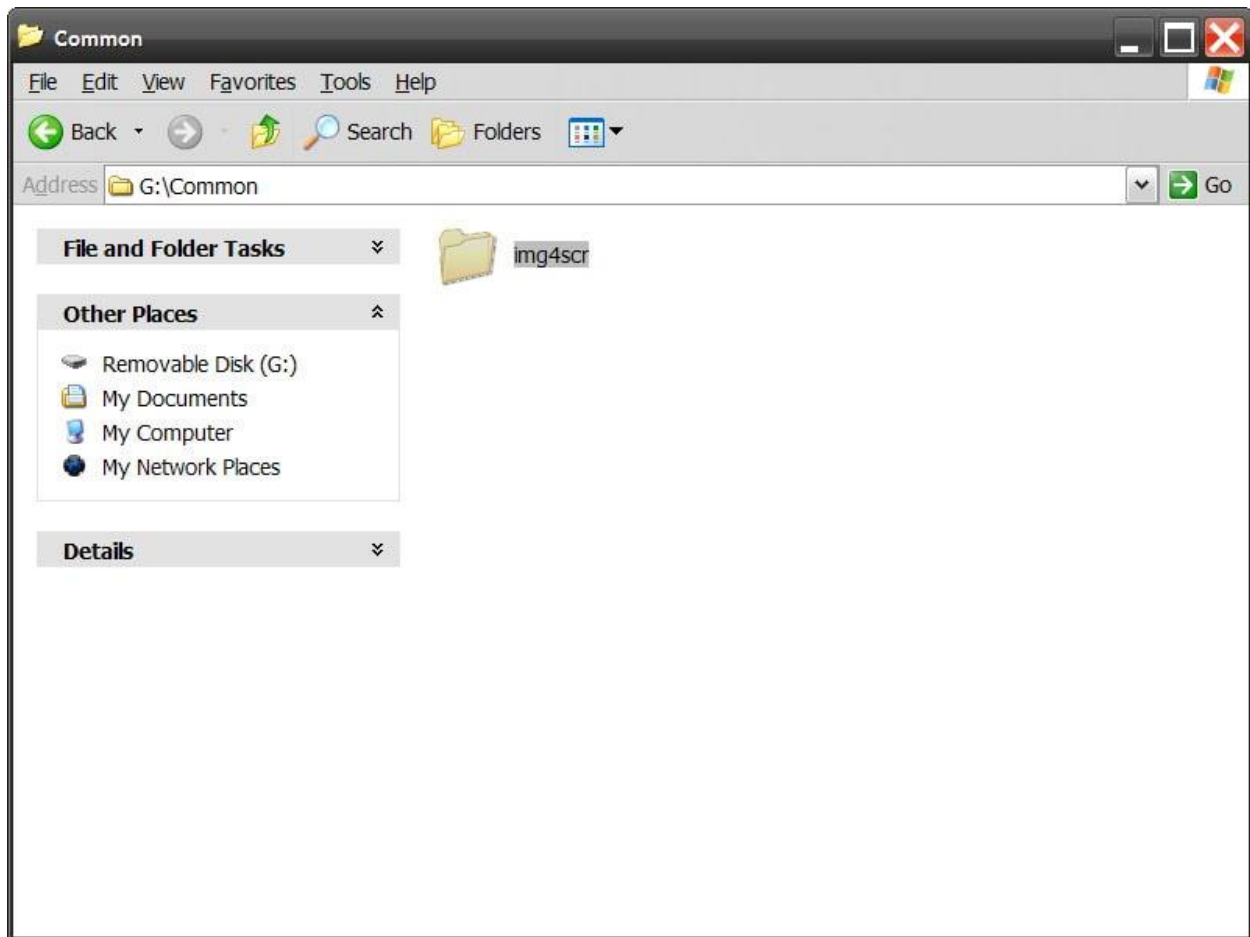


3. Next click on the SD Card in My Computer to open it. You'll need to create a folder (File>New>Folder) and rename it "Common".





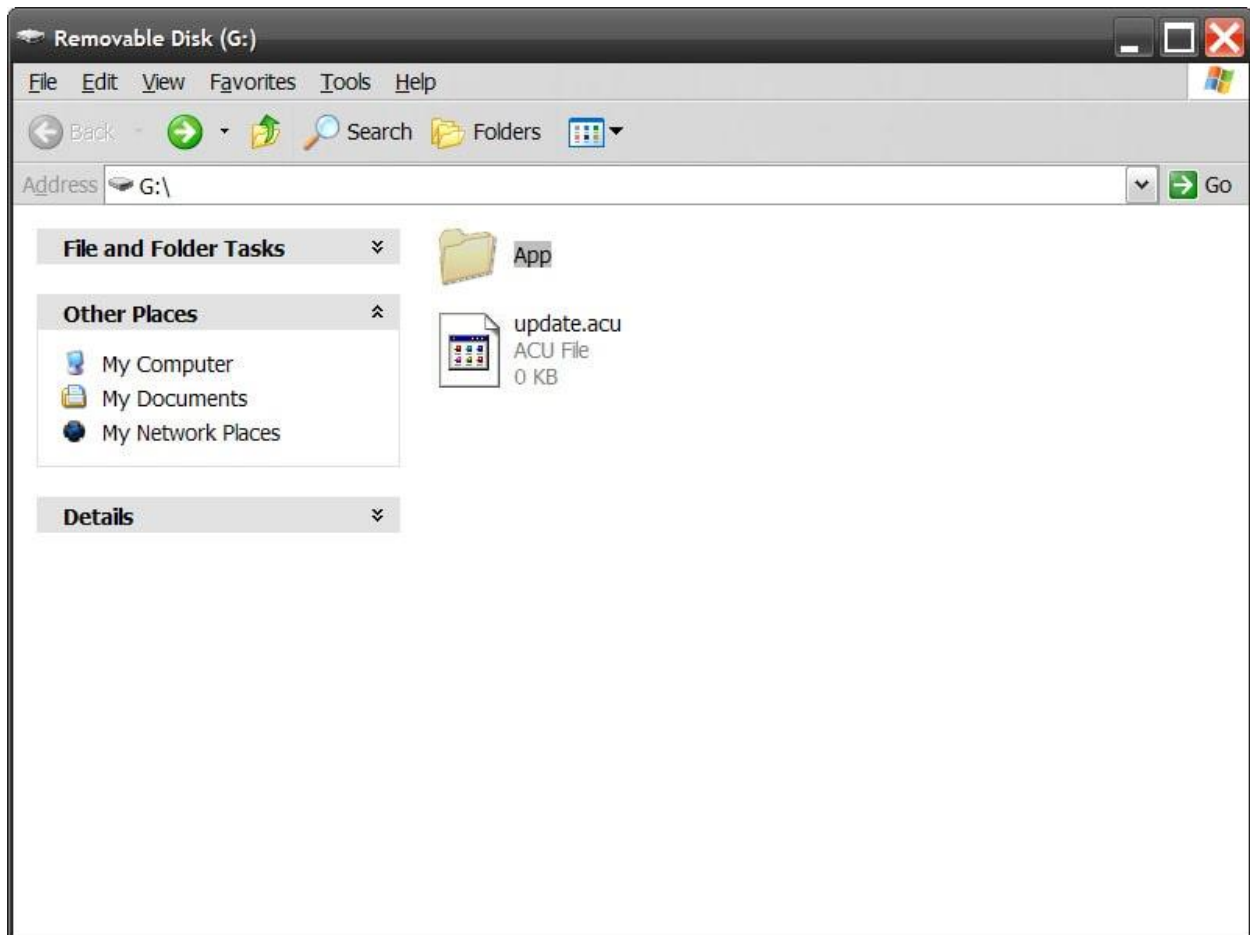
4. Next, click on the “Common” folder to open it, and create another folder (File>New>Folder) and name it “img4SCR”.



5. Inside the img4SCR folder is where you want to copy all your jpg files (center1.jpg, etc) Directory structure should look like this:

common/img4scr/center1.jpg

Instruction for ACU6 mainboards: ACU6 boards are unique in that you can load software or graphics from both a SD memory device (2GB or less) or a USB memory drive (any size). The procedure for storing the graphics is the same as above, however you need to create an "App" folder first before making "common". Then create the "common" inside "App", and "img4scr" inside "common". Lastly the jpg files inside "img4scr". Directory structure should look like this: App/common/img4scr/center1.jpg



6. Once your graphic files are copied, insert the SD card (card logo faces towards the back) into the SD card slot on the mainboard located behind the LCD. Push till it spring locks. For ACU6, if using USB, you can use either slot.



7. Reboot the ATM. 8. When the ATM is fully initialized then remove the SD card or USB device.. After the images have been loaded onto the ATM, you'll need to enable them. Enabling the Center Graphics: 1. Go into the Operator Menu. 2. Then to Customer Setup > Graphics > Advertise EN/Disable and go through each advertisement you want to show up and turn it ON. If you do not see the new images you created in this menu, it means that they did not copy correctly. Review the steps, and contact tech support if needed.